

ESTINATIONS

CLUB

**FREE
AIRFARE**

WHEN BOOKED BY
8/22/2025



Jewels of the Rhine

the Netherlands • Germany • France • Switzerland

Departure Date: August 22, 2026


Mayflower

CRUISES & TOURS

A DIVISION OF THE SCENIC GROUP

Jewels of the Rhine



Relax during a glass-top canal cruise through Amsterdam



Charming scenes abound in Strasbourg, France

DAY 1 Depart the USA: Depart the USA on your overnight flight to Amsterdam, the Netherlands.

DAY 2 Amsterdam, the Netherlands: Welcome to Amsterdam, a fascinating 700-year-old city of picturesque canals, world class museums, and cafés. Flights should arrive by 4:00pm. You will be met and transferred from the airport to your luxurious Emerald Cruises Star-Ship. Become acquainted with the amenities of your ship, or begin exploring the city. This evening, join your fellow travelers for dinner onboard. **Meal: D**

DAY 3 Amsterdam: Experience the city on a canal cruise aboard a glass-top boat. Traverse the UNESCO World Heritage network of canals, passing Roman patrician and ornate merchant houses from the Dutch Golden Age. Alternatively, join a guided bike tour to Waterland, passing through quintessential Dutch landscapes of quaint villages and windmills. Tonight, enjoy a welcome reception and gala dinner. **Meals: B, L, D**

EmeraldACTIVE: Guided bike tour to Waterland (instead of canal cruise)

DAY 4 Cologne, Germany: Cruise along the Rhine River to Cologne. The city is one of Germany's oldest and famous for its magnificent gothic cathedral - a UNESCO World Heritage Site. Join your local guide for an included walking tour of the city, traversing quaint alleyways, seeing historic monuments, and touching on the historical charms of the Old Town. After the tour, the remainder of the day is at leisure. Enjoy local entertainment onboard this evening. **Meals: B, L, D**

DAY 5 Koblenz: Cruise to the 2000-year-old town of Koblenz, situated at the confluence of the Rhine and Moselle Rivers. Enjoy a walking tour of Koblenz seeing the German Corner where the 2 rivers meet, the Church of Our Lady, and visit the Ehrenbreitstein Fortress by cable car on the opposite side

of the river. This fortress was part of the Prussian defense against the French in the 19th century and later used as a headquarters for the American military during WWII. This afternoon, sail through the spectacular UNESCO World Heritage Rhine Gorge. Pass countless medieval castles and vineyards lining the shores of this section of the river, with photo opportunities around every bend. See the infamous Lorelei statue and Pfalzgrafenstein Castle, built on an island in the middle of the river as a medieval toll station. **Meals: B, L, D**
DiscoverMORE: Moselle & Cochem (Reichsburg) Castle Visit (additional expense)

NOTE: You can choose either the included tour of Koblenz OR the DiscoverMORE option, as both tours operate at the same time

DAY 6 Ludwigshafen / Heidelberg: Continue sailing to the town of Ludwigshafen, docking site for Heidelberg. Travel by coach to Heidelberg for a guided visit of the castle ruins and a walk along the cobblestone lanes of the old town. This evening, attend a private concert as an EmeraldPLUS activity.

Meals: B, L, D

EmeraldACTIVE: Hike from Mount Königstuhl to Heidelberg

EmeraldPLUS: Private Evening Concert Performance

DAY 7 Kehl / Strasbourg, France: Once docked in Kehl, travel by coach across the river to Strasbourg, the capital of the Alsace region in France. Your guided walking tour includes the Grande Île - the historical city center and UNESCO World Heritage Site. Known for its medieval black and white timber-framed buildings, old tanning houses, baroque sandstone buildings, canals and river locks, the city's star attraction is the cathedral, dominating the main square. Enjoy free time this afternoon to continue exploring this charming town on your own. Tonight, local entertainment is provided onboard.

Meals: B, L, D



The historic Chapel Bridge crosses the Reuss River in Lucerne, Switzerland

DAY 8 Breisach, Germany / Freiburg: On today's adventure, visit the city of Freiburg, considered the 'capital of the Black Forest'. Aside from seeing the lovely sights, sample true Black Forest delicacies from the lively market in the city center near the main cathedral. Alternatively, join a guided bike tour in Breisach. **Meals: B, L, D**

EmeraldPLUS: Guided tour of Freiburg with tasting

EmeraldACTIVE: Guided bike tour in Breisach

DAY 9 Basel, Switzerland – Lucerne: After breakfast, disembark the ship in Basel and begin your Swiss adventure. Depart by coach to Lucerne, a picturesque town surrounded by mountains and meadows. An included walking tour highlights the city's landmark - the famous 14th-century Chapel Bridge. See the 17th-century Renaissance Town Hall and town squares, all set amongst the beautiful backdrop of the Swiss Alps. The remainder of the day is at leisure. **Meal: B**

DAY 10 Lucerne: Your last day is left free of planned activities. Explore on your own, or join the optional excursion to Mt. Pilatus – a mountain overlooking Lucerne that offers a unique alpine experience! This evening, get together for an included dinner at the hotel. **Meals: B, D**

DiscoverMORE: Mt. Pilatus (additional expense)

DAY 11 Lucerne / USA: Bid 'auf wiedersehen' to Europe and return home with memories of life enriching experiences from your European adventure and cruise along the Rhine River. **Meal: B**

Itinerary is subject to change.

CRUISE AND HOTEL ACCOMMODATIONS

Days 2 through 8 – Aboard an Emerald Cruises Star-Ship

Days 9 and 10 – Hotel Europe or similar, Lucerne, Switzerland

Pre-cruise hotel stays available in Amsterdam. Call for details.



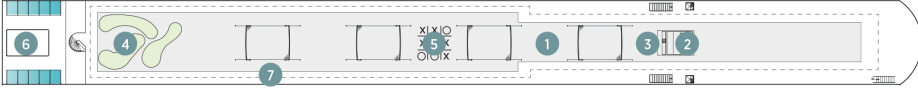
Exceptional Inclusions

- **23 Meals:** 9 breakfasts, 6 lunches and 8 dinners
- **Airport transfers** on tour dates when air is provided by Mayflower Cruises & Tours
- Visit **four countries**
- **Seven-nights in a suite or stateroom** of your choice onboard the vessel
- **First-class service** by an English-speaking crew
- **Onboard Activity Manager** will support all EmeraldACTIVE excursions and host daily onboard wellness activities, games, classes and evening entertainment
- **All gratuities included**
- **Shore excursions** with English-speaking local guides
- Visit **UNESCO World Heritage Sites**
- Personal **listening device** for shore excursions
- **All meals included** onboard
- Variety of **international cuisine**
- Complimentary **regional wines, beer and soft drinks** with onboard lunches and dinners
- Complimentary **bottled water** in your stateroom
- Complimentary **WiFi onboard**
- Complimentary **bicycles onboard** for use ashore
- **All port charges included**
- **Two-night hotel stay and touring in Lucerne**

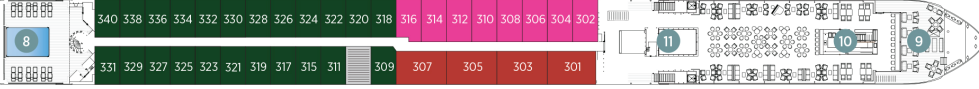
Emerald Cruises Star-Ships

Built: 2014-20 **Speed:** 15.5 mph **Staterooms:** 19 **Suites:** 72 **Length:** 443 ft. **Crew:** 47

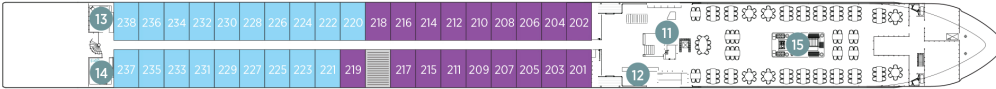
SUN DECK



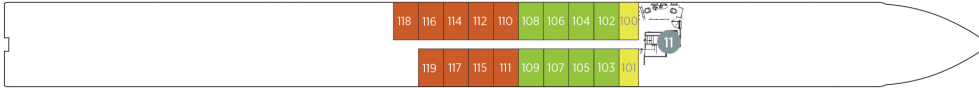
HORIZON DECK



VISTA DECK

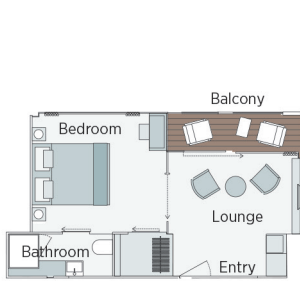


RIVIERA DECK



Public Areas and Ship Amenities

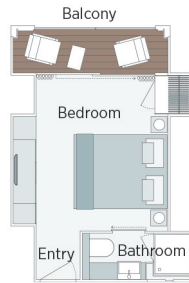
- 1 Sun Deck with Deck Chairs
- 2 Navigation Bridge
- 3 Sky Barbeque
- 4 Golf Putting Green
- 5 Games Area
- 6 Retractable Glass Roof
- 7 Walking Track
- 8 Daytime Pool / Evening Cinema
- 9 The Terrace
- 10 Horizon Bar and Lounge
- 11 Elevator
- 12 Reception
- 13 Wellness Area
- 14 Fitness Area
- 15 Reflections Restaurant



Owner's One-Bedroom Suite

315ft²

CAT SA



Grand Balcony Suite

210ft²

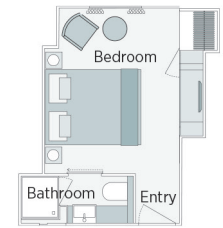
CAT S



Panorama Balcony Suite

180ft²

CAT A CAT B CAT C



Emerald Stateroom

162ft²

CAT D CAT E

2026 Departure Date
Jewels of the Rhine

		AUG 22	
CAT	STATEROOM / SUITE	DECK	
E	Emerald Stateroom	Riviera	PER PERSON TWIN: \$5,685; SINGLE ROOM ADD: + \$4,079
D	Emerald Stateroom	Riviera	PER PERSON TWIN: \$5,799; SINGLE ROOM ADD: + \$4,165
C	Panorama Balcony Suite	Vista	PER PERSON TWIN: \$6,455; SINGLE ROOM ADD: + \$4,655
B	Panorama Balcony Suite	Vista	PER PERSON TWIN: \$6,749; SINGLE ROOM ADD: + \$4,875
A	Panorama Balcony Suite	Horizon	PER PERSON TWIN: \$7,055; SINGLE ROOM ADD: + \$5,105
S	Grand Balcony Suite	Horizon	PER PERSON TWIN: \$7,525; SINGLE ROOM ADD: N/A
SA	Owner's One-Bedroom Suite	Horizon	PER PERSON TWIN: \$8,485; SINGLE ROOM ADD: N/A

FREE ROUNDTRIP AIRFARE FROM DFW WHEN BOOKED BY AUGUST 22, 2025.

After August 22, 2025, phone for current airfare rates.

Pricing includes roundtrip airport transfers to/from Sulphur Springs to Dallas DFW Airport

Air itineraries may not be available until documents are received. Air seats are assigned by the airline for the entire group and may not be available until airport check-in. Seat changes can only be attempted at the airport and may not be possible. If specific seat assignments are vital to your reservation, we recommend booking air on your own rather than booking air with the group.

Travelers Protection Plan (TPP) for River Cruises

This nonrefundable fee will provide a refund to you during the instance that you have to cancel your trip. The cancellation has to be for a covered reason (see Plan for details on coverage) and we have to be notified at least one day prior to departure. If you must leave the tour early due to personal illness or the illness or death of an immediate family member, TPP will provide a refund for any unused services after the departure of the tour. Other benefits include medical expenses for illness and injury, emergency transportation, 24 hour hot line and lost or stolen baggage assistance. Return air transportation is included ONLY if your air tickets are purchased through Mayflower Cruises & Tours. Please review the Plan for details on coverage. Should you choose not to purchase our TPP, the following per person cancellation charges will be assessed for all tours and optional excursion costs:

- 91 days or more prior to departure: Deposit amount
- 90 days to day of departure: 100% of total tour
- No refund on unused portions of the tour

TOUR ACTIVITY LEVEL



Exclusions: Mayflower Cruises & Tours reserves the right to alter its Refund and Cancellation Policy when a substantial amount of cancellation or postponement of travel is attributable to: conditions resulting from an act of God, natural or man-made disaster, fire, government action, civil disorder, war, hostilities between nations, or unavailability of transportation through no fault of Mayflower Cruises & Tours. Plan and benefits offered and administered by Trip Mate, Inc.

FOR RESERVATIONS OR INFORMATION CONTACT:

John Sellers
john.sellers@bankatcnb.com
or Sue Horchem
sue.horchem@bankatcnb.com

